



Newsletter of the Michigan Entomological Society

Vol. 67, No. 1

March 2023

MES Website: <http://michentsoc.org>

Facebook: <https://www.facebook.com/michentsoc/>

In This Issue

Breaking Diapause 2023

MES 2023 Annual Meeting

An Observation of the Regal Fritillary
(*Speyeria idalia*) in Michigan

New Beetle Species Records, continued

Breaking Diapause 2023

The 2023 Breaking Diapause meeting will be held on Saturday, March 25, 9:30 am to 3:30 pm. on the campus of Michigan State University. We will be meeting in the Gordon Guyer Conference Room, located on the second floor of the Natural Science Building, right next to the Department of Entomology offices.

Dr. Hannah Burrack, the new chair of the department, plans on joining us for part of the day. We expect to have access to the museum collection as well.

The address of the Natural Science Building is 288 Farm Lane Room 243, East Lansing, MI 48824. Parking should be available in the lot next to the Natural Science Building. The entrance to this lot is off East Circle Drive. A map of this part of campus appears on the last page of this newsletter.

2023 MES Annual Meeting

This year's MES Annual Meeting will be held jointly with the Wisconsin Entomological Society on September 15-18 at the Harbor View Marina in the beautiful coastal town of Ludington, Michigan.



The nearby Ludington State Park offers camping and excellent field trip opportunities.





Transport from Wisconsin on the S.S. Badger can be arranged at <https://www.ssbadger.com>.

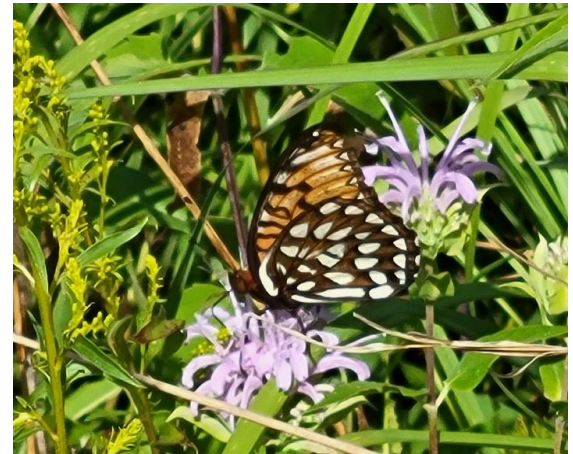
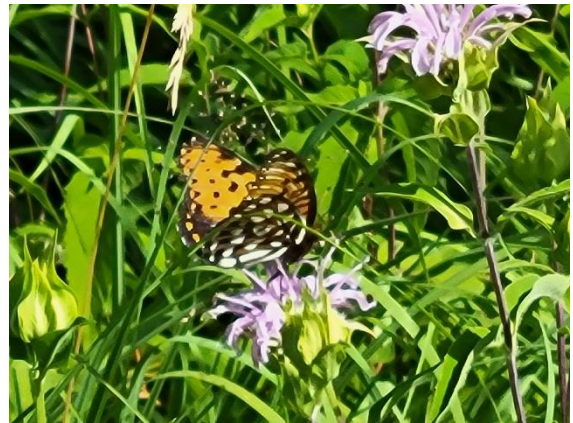
Questions about the event are welcome at any time. More information and registration details will appear in an upcoming newsletter.

Contact: John Douglass
cell: (419) 450-7245
Email: jfdouglass7@gmail.com

An Observation of the Regal Fritillary (*Speyeria idalia*) in Michigan

Duke Elsner (elsner@msu.edu)

On July 4, 2022, an adult male regal fritillary (*Speyeria idalia*) was observed by Leonard Weber at a Detroit city park in Wayne County. Leonard took several photographs (two included here) and later sent them to Ronda Spink, the Michigan Butterfly Network Coordinator, for species verification. Ronda immediately contacted me because she knew this was pretty big news.



The last record of regal fritillaries in Michigan that I am aware of was a sighting in Allegan County in July of 1994, published in a Lepidopterists' Society Field Season Report. However, this sighting must be in doubt, as it does not appear in recent publications of the Michigan Natural Features Inventory. The most recent record of the regal fritillary in their public web pages is from Newaygo County in 1989. No matter what, it has been decades since this species was observed in the state.

Details of this regal fritillary sighting have been shared with the Michigan Natural Features Inventory, Michigan Department of Natural Resources, the U.S. Fisheries and Wildlife Service and other authorities. Surveys of the area will be conducted in 2023 to attempt to verify that this is a resident population.

I have been on a personal mission to find regal fritillaries in Michigan for the last 30 years. I've made trips to observe adults in Kansas, Missouri, Illinois and Indiana,

noting the local habitats and broader terrain and vegetation in these states, hoping it would aid my search efforts in Michigan.

On July 28, 2022 I observed a butterfly northwest of Chelsea in Washtenaw County that “hit all of the right buttons” in terms of size, shape, coloration and flight characteristics, but it was flying too high and too fast to get a definitive look or a photograph.

Beetle species in the MSU-ARC not previously reported from Michigan: Contribution #3

William G. Ruesink¹ and Gary L. Parsons²

¹6400 Arrowhead Way, Williamsburg, MI 49690 (wruesink@ruesink.org)

²Department of Entomology, Michigan State University, East Lansing, MI 48824 (parsonsg@msu.edu)

In conjunction with the preparation of a list of the beetles known to occur in Michigan, we continue going through the A.J. Cook Arthropod Research Collection at Michigan State University (MSU) and checking identifications of holdings for which we have found no published record. This is an ongoing project and the list here represents our findings for several more families.

Most of these are not recent introductions but have been in the MSU collection for years. However, in the 500+ literature sources that we have examined, these have apparently never been recorded for Michigan and represent **new state records**. Many of these species have been recorded from some or most of the states and Canadian provinces surrounding Michigan, so it is somewhat unusual that they have not been previously recorded from Michigan. We also had species in the collection that were identified in the past for which Michigan records had to

be dubious or incorrect according to recent catalogs and lists. Thus, we have been checking those species in the collection for their validity. To be sure, we have found many species that had been misidentified. We have been correcting the identifications of those to the best of our abilities, some of which have also added new species names to the collection and to our Michigan beetle list (see <http://michiganbeetles.org/>).

One especially interesting find in this group is the hister beetle *Haeterius tristriatus* Horn. The MSU collection has two specimens collected by A.W. Andrews in 1923 and identified by him as *H. brunneipennis*. We had the ID checked by Michael Caterino of Clemson University who reported that they are instead *H. tristriatus*. Michigan is by far the eastern-most record for this species, which until now has not been reported closer than southeastern Manitoba (Caterino, personal communication; Bousquet and Laplante, 2006)

This third contribution includes, as did the second, an addendum listing additional species found in the MSU collection which were reported for Michigan prior to 1925 but have not been reported since and have been excluded from or doubted in most recent compilations.

New state records are herein presented for 60 species from 21 families. IDs for all of these have been verified by WGR except as noted.

Cerambycidae (1 species)

Parelapheidion incertum (Newman): 1 specimen, from Okemos, Ingham Co. (2009)

Curculionidae (1 species)

Tychius meliloti Stephens: 1 specimen, from Antrim Co. (2022)

Elateridae (2 species)

Monocrepidius bellus (Say): 2 specimens, from Kalamazoo Co. (1961) and Oakland Co. (1926); 1 w/ID by Andrews (as *Conoderus bellus*)

Setasomus nitidulus (LeConte): 4 specimens, from Isle Royale, Keweenaw Co. (old, no date), and Marquette Co. (old, no dates)

Elmidae (1 species)

Stenelmis cheryl Brown: 7 specimens, from Alger Co. (1916), Baraga Co. (1964) and Oakland Co. (1933); all w/IDs by K. Schmude

Eucnemidae (1 species)

Nematodes atropos (Say): 1 specimen, from Oakland Co. (1923), original ID by Andrews

Gyrinidae (1 species)

Gyrinus cavatus Atton: 3 specimens, from Kalamazoo Co. (1969) and Macomb Co. (1967, 1969)

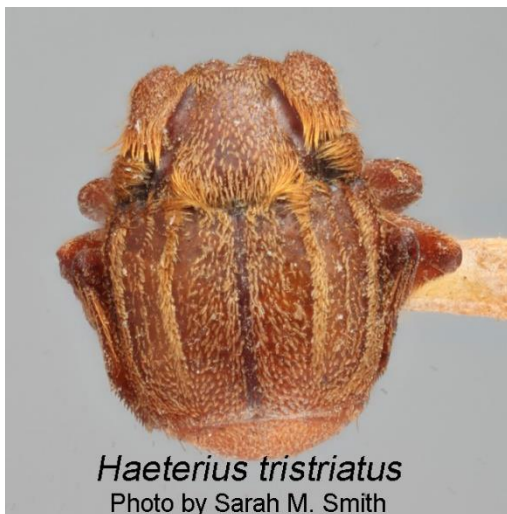
Histeridae (10 species)

Dendrophilus xavieri Marseul: 3 specimens, from Leelanau Co. (1987) and Macomb Co. (1963)

Epieris pulicarius Erichson: 5 specimens, from Clinton Co. (2002), Ingham Co. (2007), Midland Co. (1947), and St. Clair Co. (1949)

Geomysaprinus moniliatus (Casey): 3 specimens from Alpena Co. (1944), Isabella Co. (1946), and Midland Co. (1944)

Haeterius tristriatus Horn: 2 specimens, from Oakland Co. (1923) coll. by A.W. Andrews, IDs confirmed by Michael Caterino.



Haeterius tristriatus
Photo by Sarah M. Smith

Margarinotus brunneus (Fabricius): 3 specimens, from Midland Co. (1948), Saginaw Co. (1940) and St. Joseph Co. (1941); in addition the Field Museum of Natural History in Chicago holds several collections from northern MI, including a long series from Cheboygan Co. in 1945.

Platysoma deficiens (Casey): 1 specimen, from Bloomfield (Oakland Co.?, 1911)

Platysoma gracile J.E. LeConte: 1 specimen, from Northwood (Oakland Co.?, 1911); original ID by R. Wenzel

Psiloscelis perpunctata (LeConte): 1 specimen, from Oscoda Co. (1966)

Saprinus subnitescens Bickhardt: 1 specimen, from Saginaw Co. (1940)

Xestipyge geminatum (LeConte): 4 specimens, from Eaton Co. (1955), Ingham Co. (1969), and Saginaw Co. (1968)

Helophoridae (1 species)

Helophorus grandis (Illiger): 10 specimens, from Chippewa Co. (1957, 1964) and Mackinac Co. (1964)

Hydrochidae (1 species)

Hydrochus subcupreus Randell: 72 specimens, from Iron Co. (1964), Kalamazoo Co. (1957, 1959, 1960, 1961, 1963), and Keweenaw Co. (1964), all with IDs by J.L. Hellman and some confirmed by P.P. Tinerella in 2006

Hydrophilidae (1 species)

Enochrus diffusus (LeConte): 1 specimen, from Berrien Co. (1971) w/original ID by A.E.Z. Short

Lampyridae (1 species)

Pollaclasis bifaria (Say): 1 specimen, from Antrim Co. (2001)

Melandryidae (2 species)

Osphya varians (LeConte): 2 specimens, from Leelanau Co. (1941) and Wexford Co. (1944), both w/IDs by Greene

- Symphora rugosa* Haldeman: 8 specimens, from Cheboygan Co. (1953), Gladwin Co. (1953), Kalamazoo Co. (1966), Midland Co. (1943, 1957, 1958), and Oakland Co. (no date, ca. 1915)
- Meloidae (3 species)
- Lytta aenea* Say: 9 specimens, from Calhoun Co. (1936), Eaton Co. (1961), Ingham Co. (1924, 2010), Livingston Co. (1944), Midland Co. (1931), and Shiawassee Co. (1966), some w/IDs by Greene or GLP
- Meloe americanus* Leach: 4 specimens, from Clinton Co. (1967, 1982), Ingham Co. (2013), and Kalamazoo Co. (1963), one w/ID by R.J. Priest
- Meloe niger* Kirby: 2 specimens, from Ingham Co. (1887, 1891), one w/ID by F. Werner
- Melyridae (4 species)
- Anthocomus equestris* (Fabricius): 1 specimen, from Clinton Co. (2020) w/ID by G. Parsons
- Attalus scincetus* (Say): 8 specimens, from Allegan Co. (1959), Berrien Co. (1971), Lapeer Co. (1948), Livingston Co. (1944), Midland Co. (1946), Roscommon Co. (1946), Saginaw Co. (1969), and Van Buren Co. (1947), one w/ID by Greene
- Malachius aeneus* (Linnaeus): 53 specimens, from Antrim Co. (1964), Branch Co. (1973), Calhoun Co. (1930), Cheboygan Co. (1931, 1943), Chippewa Co. (1977), Dickinson Co. (1983, 1984), Eaton Co. (1937), Grand Traverse Co. (1937, 2001), Huron Co. (1979), Ingham Co. (1937, 1938, 1948, 1955, 1967, 1973), Isabella Co. (1929), Luce Co. (1934), Macomb Co. (1963, 1967, 1970), Montmorency Co. (1940), Newaygo Co. (1971), Oakland Co. (1980), Ottawa Co. (1980), Saginaw Co. (1940, 1944), Schoolcraft Co. (1940, 1981), Shiawassee Co. (1952), and Tuscola Co. (1965)
- Psilothrix foveicollis* (Kirby): 1 specimen, from Iron Co. (1964)
- Mordellidae (3 species)
- Mordellina lecontei* (Ermisch): 1 specimen, from Bay Co. (1938)
- Mordellistena vapida* LeConte: 3 specimens, from Chippewa Co. (1954) and Midland Co. (1937, 1939), 1 w/ID by Ray
- Tolidomordella discoidea discoidea* (Melsheimer): 1 specimen, from Oakland Co. (1930) w/ID by Andrews
- Mycetophagidae (1 species)
- Litargus nebulosus* LeConte: 2 specimens, from Oakland Co. (1923) w/IDs by Andrews
- Nitidulidae (8 species)
- Amphotis ulkei* LeConte: 2 specimens, from Mason Co. (1968) and Wexford Co. (1965), both w/IDs by M. Price
- Brassicogethes simplipes* (Easton): 5 specimens, from Midland Co. (1937) and Oakland Co. (1923), all w/IDs by Greene or A.W. Andrews
- Carpophilus antiquus* Melsheimer: 1 specimen from Berrien Co. (1974), w/ID by G.S. Powell
- Carpophilus hemipterus* (Linnaeus): 18 specimens, from Allegan Co. (1978), Ingham Co. (1938, 1964), Livingstone Co. (1954), Midland Co. (1941), Oakland Co. (1921, 1931, 1938), and Wayne Co. (1927), some with IDs by Gillogly, A.R. Cline, G.S. Powell, or L.E. Watrous
- Carpophilus marginellus* Motschulsky: 4 specimens, from Bay Co. (1951) and REoscommon Co. (1951), all w/IDs by Gillogly
- Carpophilus melanopterus* Erichson: 9 specimens, from Jackson Co. (1963), Montcalm Co. (1967), Shiawassee Co. (1953), and Wayne Co. (1979), 8 with IDs by J.P. Donahue, G.S. Powell, or L.E. Watrous

- Fabogethes nigrescens* (Stephens): ca. 400 specimens from many counties, including but not limited to Barry Co. (1957), Calhoun Co. (1963), Gratiot Co. (1958), Huron Co. (1957), Ingham Co. (1958, 1959), Lapeer Co. (1952), Monroe Co. (1964), Saginaw Co. (1953), Sanilac Co. (1952), Shiawassee Co. (1953), and Tuscola Co. (1958) some w/IDs by Gology, Connell, or C. Parsons
- Omosita nearctica* Kirejtshuk: ca. 160 specimens, from many counties in both peninsulas, all previously IDed as *O. colon*, which is a palearctic species; collection dates range from 1889 to 2003.
- Phalacridae (1 species)
- Olibris vittatus* LeConte: 2 specimens, from Clare Co. (1942) and Oscoda Co. (1946), one w/ID by Greene
- Phengodidae (3 species)
- Phengodes fuscipes intermedia* Wittmer: 22 specimens, from Kalamazoo Co. (1958, 1965, 1966, 1982), Lake Co. (1974), Manistee Co. (1974, 1975), Newaygo Co. (1974), and Oakland Co. (1965), some w/IDs by W. Wittmer
- Phengodes laticollis* LeConte: 1 specimen, from Oakland Co. (1927)
- Phengodes plumosa* (Olivier): 1 specimen, from Jackson Co. (1966)
- Ptiliidae (1 species)
- Ptiliola brevicollis* (Matthews): 2 specimens, from Wayne Co. (1911)
- Ptinidae (13 species)
- Calymmaderus nitidus* (LeConte): 20 specimens, from Clare Co. (1959), Clinton Co. (1956, 2002, 2003), Gladwin Co. (1959), Kalamazoo Co. (1957, 1963, 1965, 1970, 1982), Lake Co. (1975), and Midland Co. (1959), one w/ID by R. White
- Ctenobium antennatum* LeConte: 3 specimens, all from "Immature Oak std" at Branch, Lake Co. (6 & 17 May 1977), all w/IDs by G. Parsons
- Dorcatoma falli* White: 2 specimens, from Dickinson Co. (1984) and Oakland Co. (1947)
- Euvrilletta brevis* White: 2 specimens, from Gladwin Co. (1959) and Midland Co. (1958), both w/IDs by R. White
- Gibbium aequinoctiale* Boieldieu: 20 specimens, only two with locality labels, they being from E. Lansing, Ingham Co. (1957, 1959). The other 18 appear to have been collected at the same time & place as the 1957 specimen.
- Mezium affine* Boieldieu: 14 specimens, from Midland Co. (1938) and Oakland Co. (1925)
- Oligomerus alternans* LeConte: 9 specimens, from Clinton Co. (2021), Ingham Co. (1975, 1980) Kalamazoo Co. (1960, 1961), and Midland Co. (1952), two w/IDs by R. White or G. Parsons
- Petalium alaseriatum* Ford: 7 specimens from Gladwin Co. (1959), Kalamazoo Co. (1967, 1968), and Midland Co. (1958)
- Petalium incisum* Ford: 2 specimens, from Kalamazoo Co. (1965) and Midland Co. (1958)
- Petalium seriatum* Fall: 2 specimens from Midland Co. (1959), one w/ID by R. White
- Ptilinus lobatus* Casey: 5 specimens, from rotary traps in Saginaw Co. (24 May to 7 June 1968)
- Ptilinus pruinosus* Casey: 2 specimens, from Midland Co. (1957) and Northwood [Oakland Co.?] (1911), both w/IDs by R. White
- Ptinus concurrens* Fall: 1 specimen from Midland Co. (1961)

In addition to the above new state records, the MSU collection holds specimens of the following 45 species which were reported for Michigan prior to 1925 but have not been reported since and have been excluded from or doubted in most recent compilations.

Elateridae

Idolus bigeminatus (Randall): 3 specimen, 1 w/ID by Knull, from Keweenaw Co. (old w/no date, 1955); previously reported by Wolcott (1909) and Hubbard and Schwarz (1878)

Selatosomus pulcher (LeConte): 1 specimen w/ID by Andrews, Whitefish Point, Chippewa Co. (1913); previously reported by Andrews (1923)

Setasomus aratus (LeConte): 3 specimens, from Keweenaw Co. (1957 & old, no date); previously reported by Adams (1909) and Hubbard and Schwarz (1878)

Eucinetidae

Eucinetus morio LeConte: 1 specimen, Detroit, Wayne Co. (old, no date); previously reported by Hubbard and Schwarz (1878)

Geotrupidae

Bolbocerosoma farctum (Fabricius): 1 specimen, from Oakland Co. (1908), ID by GLP; previously reported by Hubbard and Schwarz (1878)

Histeridae

Acritus exiguus (Erichson): 3 specimens, from Isabella Co. (1946) and Midland Co. (1940), all coll. by R.R. Dreisbach & w/IDs by H.R. Dodge; previously reported by Hubbard and Schwarz (1878)

Aeletes politus LeConte: 10 specimens, from Clinton Co. (2000, 2007, 2008), Huron Co. (1949), and Wayne Co. (old, not date), some w/IDs by GLP; previously reported by Hubbard and Schwarz (1878)

Atholus perplexus (LeConte): 2 specimens, 1 from Wayne Co. (old, no date) & 1 just Mich. (old, no date), both w/IDs by Hatch 1925; previously reported by Hatch (1924)

Bacanius punctiformis (LeConte): 9 specimens, from Lenawee Co. (1952), Saginaw Co. (1956), Tuscola Co. (1952), and Wayne Co. (old, no date); previously reported by Hubbard and Schwarz (1878)

Dendrophilus punctatus (Herbst): 2 specimens, from Macomb Co. (1968) and Wayne Co. (old no date); previously reported by Schwarz (1876)

Eblisia carolina (Paykull): 35+ specimens, from Cheboygan Co. (1953), Lapeer Co. (1939), Livingston Co. (1944), Midland Co. (1937, 1956), Newaygo Co. (1956), Saginaw Co. (1940), Shiawassee Co. (1952), Wayne Co. (1911), and other counties, some w/IDs by R. Wenzel, A.W. Andrews, or R.H. Arnett, Jr.; previously reported by Hubbard and Schwarz (1878) and Townsend (1886)

Margarinotus interruptus (Palisot de Beauvois): 13 specimens, from Ingham Co. (1932), Midland Co. (1941, 1945, 1952), Ottawa Co. (1932, 1959), Roscommon Co. (1936), Sanilac Co. (1939), Shiawassee Co. (1943), St. Clair Co. (old, no date), and Wayne Co. (old, no date); previously reported by Hubbard and Schwarz (1878) and Andrews (1923)

Phelister vernus (Say): 2 specimens, from Saginaw Co. (1968) w/ID by M. Caterino, and Wayne Co. (old, no date); previously reported by Townsend (1889)

Platysoma coarctatum J.E. LeConte: 6 specimens, from Ingham Co. (2007), Midland Co. (1947), St. Clair Co. (old, no date), and Wayne Co. (old, no date), one w/ID by R.L. Wenzel & another w/ID by G. Parsons; previously reported by Hubbard and Schwarz (1878)

Platysoma cylindricum Paykull: 3 specimens, from Monroe Co. (2002), and Oakland Co. (1911), 2 w/IDs by J.E. Zablotny; previously reported by Leng (1920) and Hubbard and Schwarz (1878)

Teretrius americanus LeConte: 7 specimens, from Berrien Co. (1919), Ingham Co. (2007), Midland Co. (1945), and Muskegon Co. (2008), 4 w/IDs by R. Wenzel & 1 by GLP; previously reported by Hubbard and Schwarz (1878)

Kateridae

Heterhelus abdominalis (Erichson): 50+ specimens, from Barry Co. (1955), Ingham Co. (1960), Iosco Co. (1952), Jackson Co. (1959), Kalkaska Co. (1954, 1957), Mecosta Co. (1953), Midland Co. (1937, 1941), Oakland Co. (1930), Sanilac Co. (1952), and more, some w/IDs by A.R. Cline, A.W. Andrews, C.T. Parsons, H.R. Dodge; previously reported by Hubbard and Schwarz (1878)

Laemophloeidae

Cryptolestes turcicus (Grouvelle, 1876): 8 specimens, from Midland Co. (1941), and Muskegon Co. (old, no date); previously reported by Casey (1884) when he described *Laemophloeus truncatus* (which has since been synonymized with *C. turcicus*) from a MI specimen collected by Schwarz

Latridiidae

Melanophthalma picta (LeConte): 9 specimens, from Midland Co. (1937, 1945, 1948, 1952, 1956), Saginaw Co. (1953), and Wayne Co. (old, no date), one w/ID by Greens and another by Wkl; previously reported by Hubbard and Schwarz (1878)

Melanophthalma villosa (Zimmermann): 2 specimens, from Clare Co. (1953) and Midland Co. (1959); previously reported by Fall (1899), Hatch (1924), and Townsend (1889)

Leiodidae

Catops americanus Hatch: 2 specimens, from Midland Co. (1941), both w/IDs by Green; previously reported by Andrews (1923) and Hatch (1924)

Melandryidae

Emmesa labiata (Say): 1 specimen, from Oakland Co. (1909) w/ID by Andrews and by Hyslop; previously reported by Hubbard and Schwarz (1878)

Enchodes sericea (Haldeman): 13 specimens, from Antrim Co. (2003), Clinton Co. (2021), Ingham Co. (1890, 1964, 1982), Isabella Co. (1954), Kalamazoo Co. (1963, 1965), and Midland Co. (1959), one w/ID by GLP; previously reported by Hubbard and Schwarz (1878) and Andrews (1916)

Hypulus simulator Newman: 2 specimens, from Northwood [Oakland Co.?] (1910), and Wayne Co. (1907), both w/IDs by Andrews; previously reported by Hubbard and Schwarz (1878)

Symphora flavicollis Haldeman: 14 specimens, from Alger Co. (1955), Dickinson Co. (1984), Lake Co. (1974), Manistee Co. (1957, 1973, 1975), Marquette Co. (1981), Midland Co. (1958), Schoolcraft Co. (1960), and Wayne Co. (old, no date); previously reported by Hubbard and Schwarz (1878)

Xylita laevigata (Hellenius): 2 specimens, from Dickinson Co. (1983), and Montmorency Co. (1941); previously reported by Hubbard and Schwarz (1878)

Melyridae

Attalus pallifrons (Motschulsky): 7 specimens, from Clinton Co. (1952), Midland Co. (1942, 1958), and Saginaw Co. (1968), 3 w/IDs by M.Y. Marshall; previously reported by Hubbard and Schwarz (1878)

Hypebaeus apicalis (Say, 1825): 41 specimens, from Bay Co. (1940), Lake Co. (1974), Macomb Co. (1970), Midland Co. (1942, 1943, 1944, 1945, 1947, 1949, 1950, 1952, 1954, 1957, 1958, 1959), Muskegon Co. (1958), Saginaw Co. (1952), Sanilac Co. (1952), Shiawassee Co. (1952), and Wayne Co. (old, no date); previously reported by Hubbard and Schwarz (1878) as

Pseudebaeus oblitus

Nodopus erichsonii (LeConte): 1 specimen, from Lake Co. (1977); previously reported by Hubbard and Schwarz (1878)

Nodopus flavilabris (Say): 1 specimen, from Ingham Co. (1891); previously reported by Andrews (1916)

Mordellidae

Glipostenoda ambusta (LeConte): 10 specimens, from Clinton Co. (2021), Oakland Co. (1930), Ogemaw Co. (1937), and Wayne Co. (1943), some w/IDs by G. Parsons or Ray; previously reported by Hubbard and Schwarz (1878) as *Mordellistena ambusta*

Mycetophagidae

Litargus balteatus LeConte: 1 specimen, from Wayne Co. (1941), previously reported by Schwarz (1876) and Hubbard and Schwarz (1878)

Mycetophagus didesmus (Say), 1 specimen, from Roscommon Co. (1945); previously reported by Hubbard and Schwarz (1878)

Nitidulidae

Amphicrossus ciliatus (Olivier): 39 specimens, from Bay Co. (1951, 1957), Berrien Co. (1957), Clinton Co. (1972), Ingham Co. (1958, 1959, 1960), Kalamazoo Co. (1957, 1961, 1963), Mecosta Co. (1957), Midland Co. (1947, 1957), Oakland Co. (1940), Saginaw Co. (1949), and Wayne Co. (1941), some w/IDs by Andrews, Connell, L. Gillogly or L.E. Watrous; previously reported by Hubbard and Schwarz (1878)

Conotelus obscurus Erichson: 44 specimens, from Bay Co. (1935, 1973), Gratiot Co. (1954), Macomb Co. (1966, 1973), Menominee Co. (1937), Midland Co. (1932, 1936, 1941), and Oakland Co. (1964), some w/IDs by Gillogly; previously reported by Andrews (1923)

Cryptarcha concinna Melsheimer: 5 specimens, from Alpena Co. (1951), Oakland Co. (1916, 1922, 1928), and Wayne Co. (1910), most w/IDs by Andrews or Gillogly; previously reported by Hubbard and Schwarz (1878)

Epuraea nearctica Kirejtshuk & Kvamme: 12 specimens, from Keweenaw Co. (1953), Marquette Co. (1953), Midland Co. (1937, 1945), and Oakland Co. (1926, 1927); previously reported by Andrews (1923) and Hubbard and Schwarz (1878) as *E. helvola*, and in the MSU collection under the same name. Recently it was shown that the name *helvola* applies to a different species, and the name *nearctica* has been established for what we used to call *helvola*.

Omosita discoidea (Fabricius): 9 specimens, from Midland Co. (1945), Oakland Co. (1924), and Oscoda Co. (1966), some w/IDs by Gillogly or Andrews; previously reported by Wolcott (1909) and Hubbard and Schwarz (1878)

Prometopia sexmaculata (Say): 20 specimens, from Berrien Co. (1969), Branch Co. (1976), Cheboygan Co. (1931), Clare Co. (1950), Ingham Co. (1958), Kalamazoo Co. (1956, 1957, 1968), Midland Co. (1941), Oakland Co. (1927), and Wayne Co. (old, no date), most w/IDs by Gillogly, A.W. Andrews, A.R. Cline, or L.E. Watrous; previously reported by Hubbard and Schwarz (1878)

Phalacridae

Stilbus nitidus (Melsheimer): 1 specimen from East Lansing, Ingham Co. (1890); previously reported by Hubbard and Schwarz (1878)

Ptiliidae

Nossidium americana (Motschulsky): 7 specimens, from M.A.C. [Ingham Co.?] (old, no date), and Wayne Co. (old, no date); previously reported by Schwarz (1876) and Hubbard and Schwarz (1878)

Ptinella quercus (LeConte): 6 specimens representing two collections, both from Detroit, Wayne Co. (1905 & old, no date); previously reported by Schwarz (1876) and Hubbard and Schwarz (1878)

Ptinidae

Caenocara scymnoides LeConte: 4 specimens, from Clare Co. (1959), Dickinson Co. (1983), and Lake Co. (1975), 2 w/IDs by White; previously reported by Hubbard and Schwarz (1878) and Schwarz (1876)

Dorcatome pallicornis LeConte: 7 specimens, from Dickinson Co. (1984), Ingham Co. (1957), and Oakland Co. (1947); previously reported by Hubbard and Schwarz (1878)

Petalium bistriatum (Say): 2 specimens from Midland Co. (1958) and Oakland Co. (1935), one w/ID by White; previously reported by Hubbard and Schwarz (1878)

Acknowledgements

We thank Michael S. Caterino, Clemson University, for identifying and providing distributional information for *Haeterius tristriatus*. We also thank Sarah M. Smith, Michigan State University, for taking photographs of *H. tristriatus* and corresponding with Dr. Caterino to obtain the identification.

Literature Cited

- Adams, C. C. 1909.** The Coleoptera of Isle Royale, Lake Superior, and their relation to the North American centers of dispersal. p. 157-203 in Adams, C. C. An ecological survey of Isle Royale, Lake Superior. Annual Report of the Michigan Geological Survey.
- Andrews, A. W. 1916.** Results of the Mershon Expedition to the Charity Islands, Lake Huron: Coleoptera. p. 65-108 in Miscellaneous Papers on the Zoology of Michigan. Michigan Geological and Biological Survey Publication 20.
- Andrews, A. W. 1923.** The Coleoptera of the Shiras Expedition to Whitefish Point, Chippewa County, Michigan. Papers of the Michigan Academy of Science, Arts and Letters, [1921] Vol. I: 293-390.
- Bousquet and Laplante. 2006.** Insects and Arachnids of Canada, Part 24, Coleoptera Histeridae. NRC Research Press, Ottawa, Ontario, Canada. 485 pp.
- Casey, T. L. 1884.** Contributions to the descriptive and systematic coleopterology of North America. Part I. pp. 1-60. Philadelphia: Collins Printing House.
- Fall, H. C. 1899.** Revision of the Lathridiidae of Boreal America. Transactions of the American Entomological Society 26: 101-190.
- Hatch, M. H. 1924.** A list of Coleoptera from Charlevoix County, Michigan. Michigan Academy of Science, Arts and Letters 4(Pt. 1): 543-586.
- Hubbard, H. G. and E. A. Schwarz. 1878.** The Coleoptera of Michigan. Proc. American Philosophical Society 17: 593-669.
- Leng, C. W. 1920.** Catalogue of the Coleoptera of America, North of Mexico. John D. Sherman, Jr., Mount Vernon, New York. 470 pp.

Schwarz, E. A. 1876. List of Coleoptera collected in Michigan in 1874. *Psyche* 1: 145-148.

Townsend, C. H. T. 1886. Coleoptera found in dead trunks of *Tilia americana* L., in October. *The Canadian Entomologist* 18: 65-68.

Townsend, T. 1889. Contribution to a list of the Coleoptera of the Lower Peninsula of Michigan. *Psyche* 5: 231-325.

Wolcott, A. B. 1909. Supplementary list of Isle Royale beetles. p. 204-215 in Adams, C.C. An ecological survey of Isle Royale, Lake Superior. *Ann. Rept. Michigan Geol. Survey.*

